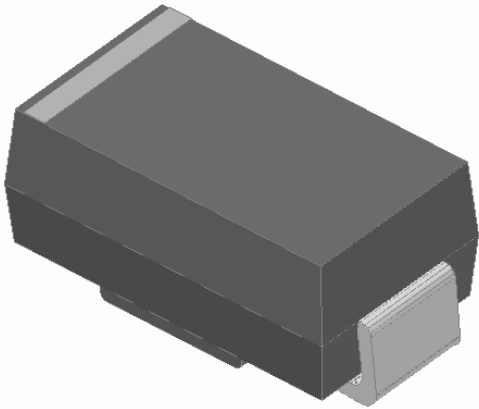




Surface Mount High Efficient Rectifier

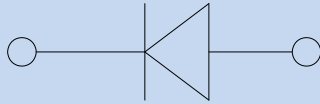


Features

- Low profile package
- Ideal for automated placement
- Glass passivated chip junction
- High forward surge capability
- Super fast reverse recovery time
- Meets MSL level 1, per J-STD-020, LF maximum peak of 260 °C

Typical Applications

For use in high frequency rectification of power supplies, inverters, converters, and freewheeling diodes for consumer (Ta=25 °C)



UNIT	HS2AA	HS2BA	HS2DA	HS2FA	HS2GA	HS2JA		
V	50	100	200	300	400	600	800	1000
V	35	+0	140	210	280	420	560	+00
V	50	100	200	300	400	600	800	1000
A	2.0							
A	50							
	100							
A ² s	10.375							
	-55 ~ +150							
	-55 ~ +150							

unless otherwise specified

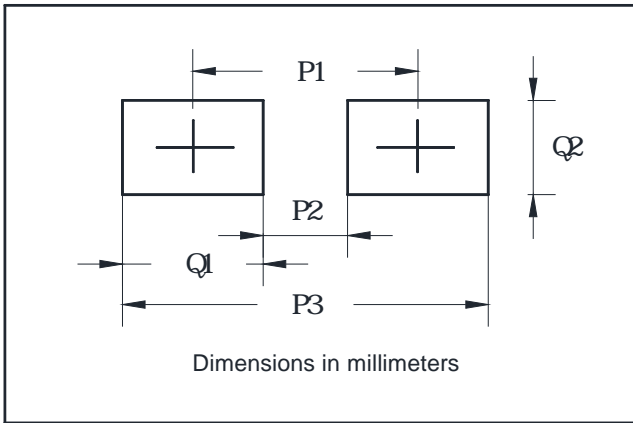
PARAMETER	SYMBOL	UNIT	TEST CONDITIONS	HS2AA	HS2BA	HS2DA	HS2FA	HS2GA	HS2JA	HS2KA	HS2MA
Maximum instantaneous forward voltage	V _F	V	I _F =2.0A	1.0			1.3		1.7		
Maximum reverse recovery time	t _r	ns	I _F =0.5A, I _R =1.0A, I _r =0.25A	50						75	
Maximum DC reverse current at rated DC blocking voltage	I _R	μA	T _j =25	5							
			T _j =125	100							
Typical junction capacitance	C _j	pF	Measured at 1MHz and Applied Reverse Voltage of 4.0 V.D.C	32			17		12		

HS2AA THRU HS2MA



HS2AA THRU HS2MA

Suggested Pad Layout



DO-214AC(SMA)	
Dim	Millimeters
P1	4.00
P2	1.50
P3	6.50
Q1	2.50
Q2	1.70



HS2AA THRU HS2MA

Disclaimer

The information presented in this document is for reference only. Yangzhou Yangjie Electronic Technology Co., Ltd. reserves the right to make changes without notice for the specification of the products displayed herein to improve reliability, function or design or otherwise.

The product listed herein is designed to be used with ordinary electronic equipment or devices, and not designed to be used with